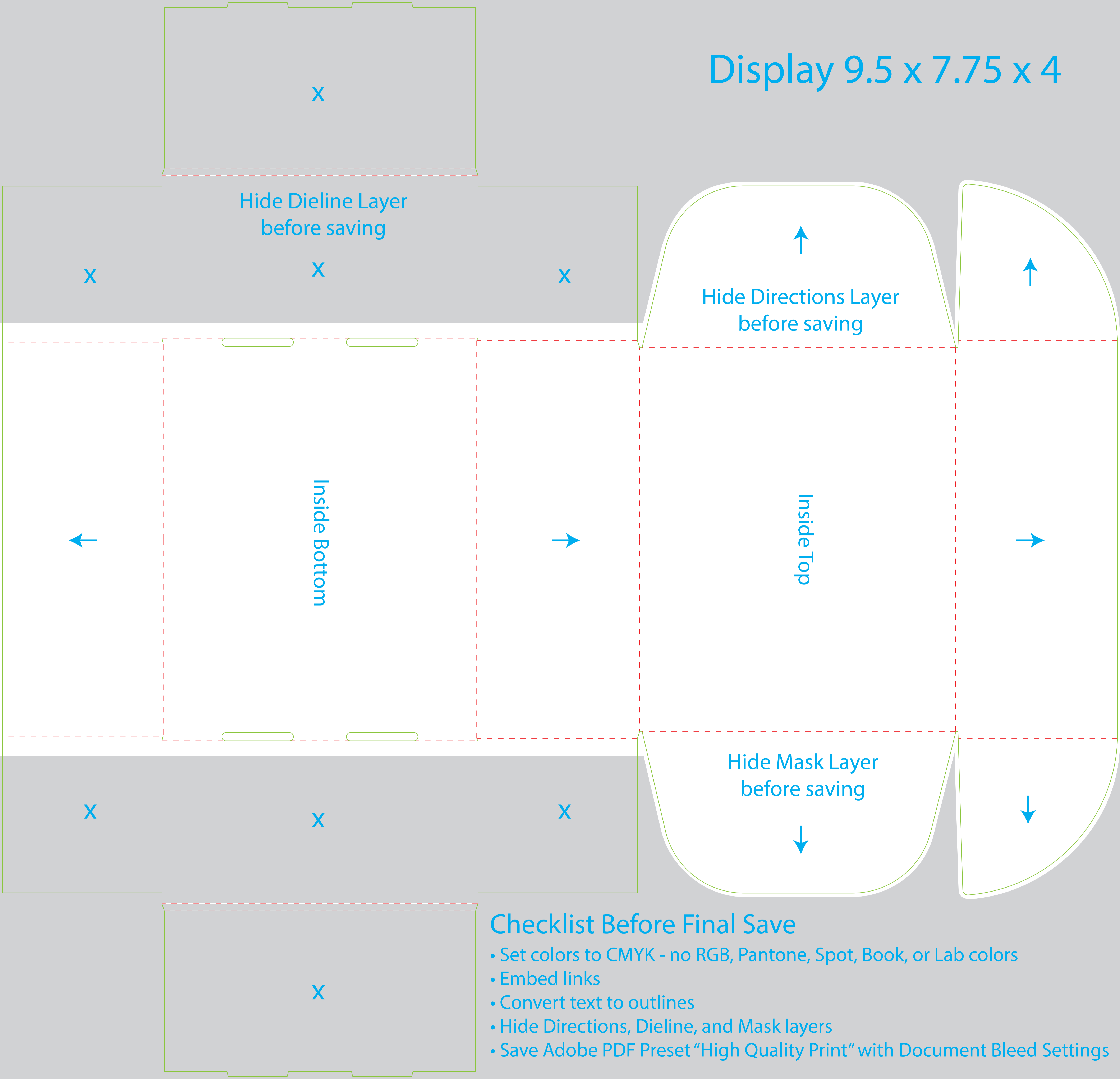


Display 9.5 x 7.75 x 4



Hide Dieline Layer  
before saving

Hide Directions Layer  
before saving

Hide Mask Layer  
before saving

Inside Bottom

Inside Top

### Checklist Before Final Save

- Set colors to CMYK - no RGB, Pantone, Spot, Book, or Lab colors
- Embed links
- Convert text to outlines
- Hide Directions, Dieline, and Mask layers
- Save Adobe PDF Preset "High Quality Print" with Document Bleed Settings